



HAMMERS MILLS

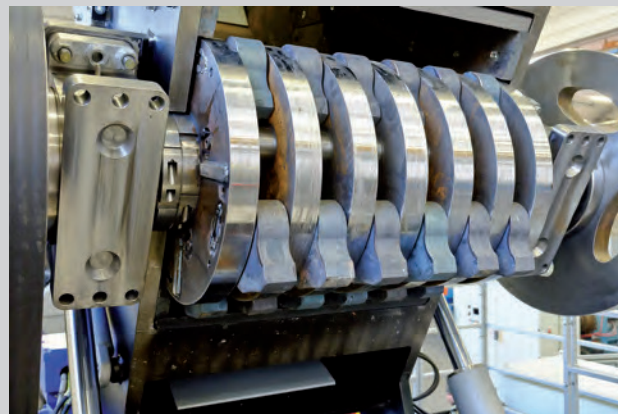
Z15/1000

- 
- Main applications**
- Engine crankcase
 - Aluminum
 - Pre-shredded light metal scrap

Forrec Hammers Mill mod. **Z15/1000** is unique thanks to its sturdy frame and the easy access to the main components subject to wear and tear.

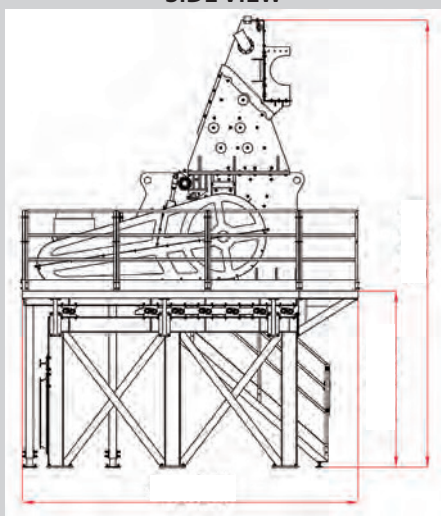
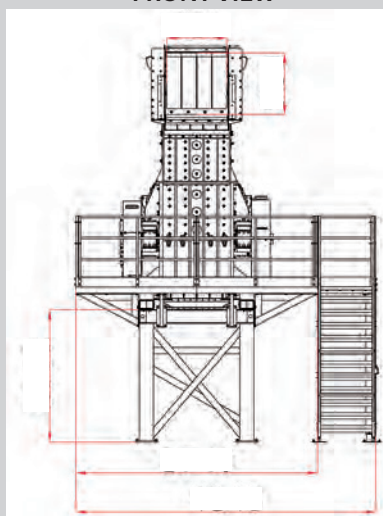
The main advantages of Forrec Hammer Mill:

- 1 Hydraulic opening system for the upper cover.
- 2 Hydraulic lifting of the rotor by means of the upper cover lifting.
- 3 Hydraulic opening for the discharge of foreign bodies.
- 4 Screen fixed by the upper cover.
- 5 Customizable hammers by shape, thickness, number.
- 6 Adjustable cutting plates.
- 7 Cutting chamber with changeable armours made of anti.wear material.
- 8 Special anti-vibrators to reduce stresses on the machine support frame.
- 9 Inverter for rotors revolutions control.



FRONT VIEW

SIDE VIEW



Example of realized project

Technical Data

Feeding opening dimensions	28.7 x 38.1 inches
Rotor diameter with hammers	35.4 inches
Rotor length	40 inches
Range of revolutions	from 420 to 740 rpm
Hammers	n. 24
Hammer weight	35.2 lbs
Power	250 kW Electric / 335.2 HP
Weight	+/- 17 tons (support frame, hopper and hydraulic power unit excluded)

Available in other models.
Technical alterations reserved



COLE INTEGRATED SYSTEMS INC.

89 Glow Avenue, Hamilton, ON L8H 3V7 Main Tel: 905-548-0979 Fax: 905-548-6668
www.coleintegratedprocesses.com

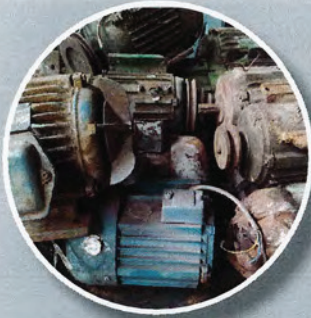




COLE INTEGRATED SYSTEMS INC.

HAMMER MILLS

Input material



Electric motors



Meatballs



Mixed scrap



Metal clips



NF (copper, alu)



NF (copper, alu)



Shredded scrap



Coolant scrap



FE



FE

Output material



COLE INTEGRATED SYSTEMS INC.

89 Glow Avenue, Hamilton, ON L8H 3V7 Main Tel: 905-548-0979 Fax: 905-548-6668

www.colesintegratedprocesses.com